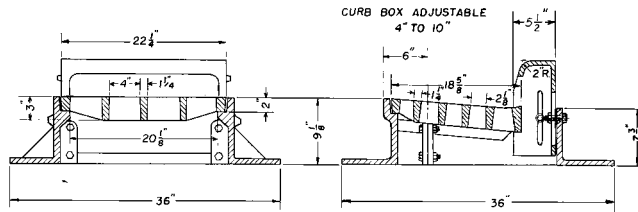


■ Note: When specifying/ordering grates, refer to "Choosing the Proper Inlet Grate" on pages 125-126.  
For a complete listing of FREE OPEN AREAS and WEIR PERIMETERS of all NEENAH grates, refer to pages 327-332.

## R-3236-A Split Combination Inlet Frame, Grate, Curb Box

Heavy Duty



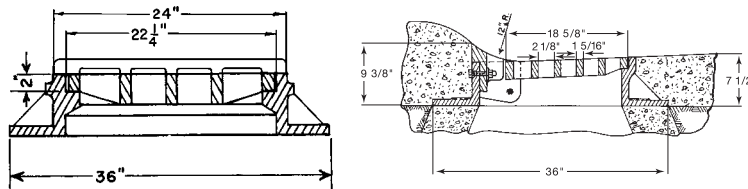
CATALOG NUMBER	GRATE TYPE	SQ. FT. OPEN	WEIR PERIMETER LINEAL FEET
R-3236-A	C	1.2	4.9

Weep holes furnished standard.

Split design facilitates forming for pavement or gutter. NO BOXING OUT, NO SPECIAL FORMS REQUIRED. Either the curb-side portion or the street-side portion of the casting may be placed against the form at the prescribed location so that concrete may be poured with the unit in place. When form is removed, the corresponding portion of the casting may be bolted to the portion in position to form a complete unit.

## R-3237 See pages 210-214 for more Roll Type products Roll Type Inlet Frame, Grate, Curb Box

Heavy Duty

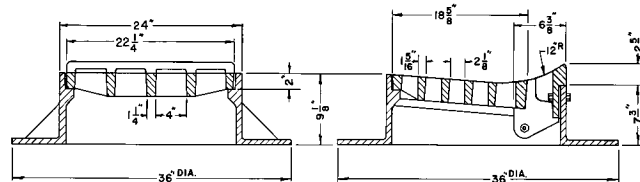


CATALOG NUMBER	GRATE TYPE	SQ. FT. OPEN	WEIR PERIMETER LINEAL FEET
R-3237	C	1.3	4.9

Same as R-3236 except curb box is designed for roll type curb.

## R-3237-1 Roll Type Inlet Frame, Grate, Curb Box

Heavy Duty



CATALOG NUMBER	GRATE TYPE	SQ. FT. OPEN	WEIR PERIMETER LINEAL FEET
R-3237-1	C	1.3	4.9

Supplied By:

**TRENCHDRAIN  
SUPPLY**

877-903-7246

www.trenchdrainsupply.com